

MRE

Moisture Repair-Enabling Essence

Professional Edition



3 ampoules (5 ml each)



Patent Extraction Technology EVF-G3

Used rotary evaporator to concentrate wound active repair ingredients that enhance the absorption capacity.

EVF-G3 Patent Technology

EVF-G3 (exclusive vapor fraction-Generation 3) patent extraction process has an **exclusive vapor fraction** to obtain a unique profile through high-performance liquid chromatography.

This invention has effects in treating skin injuries, dermatological disorders, stimulating cell regeneration, and stimulating hair growth.

Benefit of EVF-G3 process

- A. Treatment properties:** FDA Clinical Trial- Phase II
- B. Pure and Stable:** Follow Patent extraction SOP
- C. Multi-Potential:** Vapor fraction has several dosage form design



EVF-G3 Method of Procedure



Rude Extract

1. Select Non-GMO of Glycine Max
2. Smash and obtain rude extract of the Glycine Max seeds

Extraction

1. Providing a rude extract of the seeds in a 15% wt. patent extraction solution

Vaporization

1. Vaporizing the rude extract at a pressure lower than about 1 atm
2. Control the lower than 110 °C
3. Obtain the vapor fraction extract

GME-1

Glycine Max External use
No.207 Extract

Manufacture Guideline

p	PIC/SGMP	p	ISO13485
p	ISO22716	p	HALA
p	ISO9001	p	FDA/CE

Quality

Safety

Active

Functional Repair Ingredients-GME-1

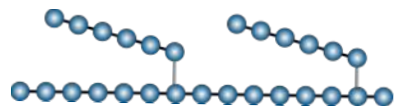
MRE is one of the few extracts with [Anti-inflammation] [Anti-oxidation] and [Whitening] function.

GME-1 (Glycine Max External Extract)

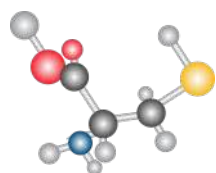
- FDA Botanical Drug API

GME-1 is the Glycine Max extract after EVF-G3 patent technology. It has botanical drug development potential, and the GME-1 entire botanical mixture is generally considered the active ingredient for other product development.

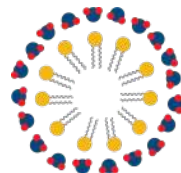
Now, GME-1 was shown high skin injuries and dermatological disorders treatment property and has a strong potential to become the first Glycine Max extract FDA Botanical drug.



Polysaccharide



Amino acid



Lecithin

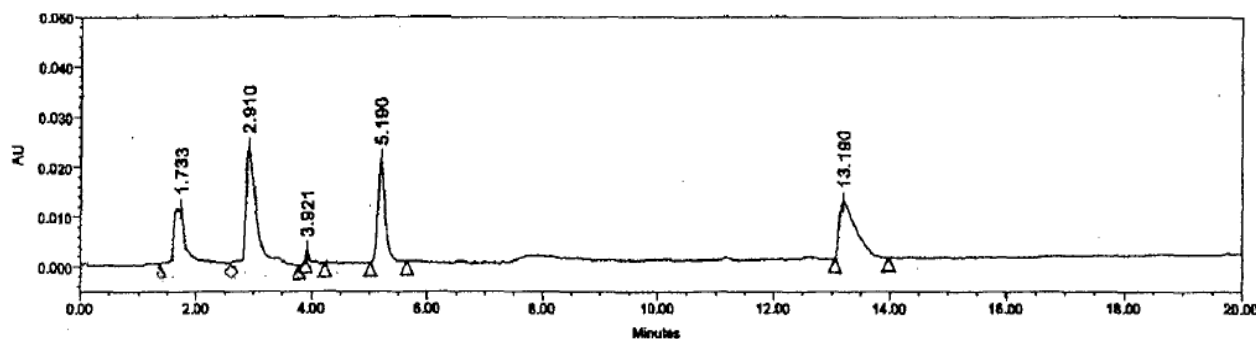


GME-1 (Glycine Max External Extract)

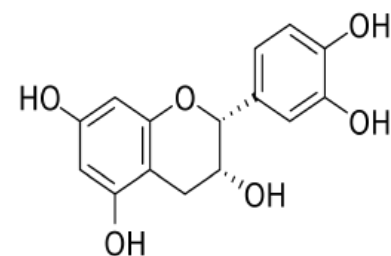
- FDA Botanical Drug API

To characterize the GME-1, we have performed each botanical raw material's chemical identification by a chromatographic method.

After the FDA Clinical test for diabetes foot wound trial, GME-1 active constituents were preliminarily determined as polymerized procyanidins complex and isoflavone complex component.

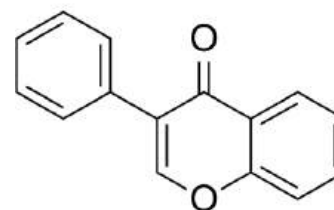


- Illustrates the HPLC spectrogram through EVF-G3 process



Procyanidins Complex

- Inhibit the melanin and melanosomes
- Relief of pain
- Antioxidant properties
- Anti-inflammatory properties



Isoflavone Complex

- Cell proliferation and differentiation.
- Release of glutathione (GSH)
- Antioxidant properties
- Anti-inflammatory properties

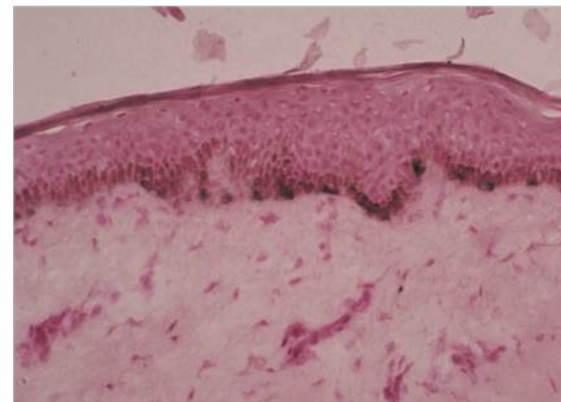
Diabetic Foot Ulcers Healing

-Mechanism of GME-1

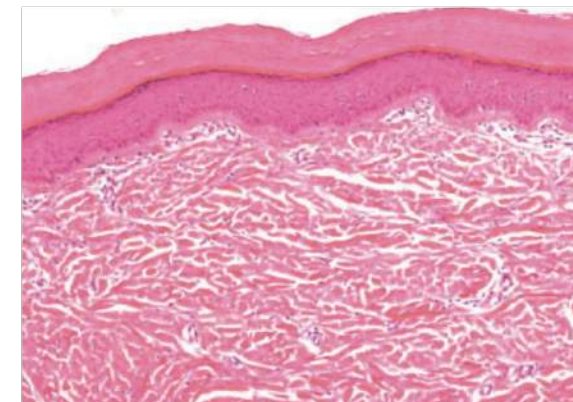
GME-1 Shortening inflammation duration; accelerating into proliferative phase.

GME-1 Facilitates Diabetic Wound Healing by Reducing IL-1 β , IL-6 at Inflammatory Phase and Increasing PDGF at Proliferative Phase.

Anti-inflammation action



other

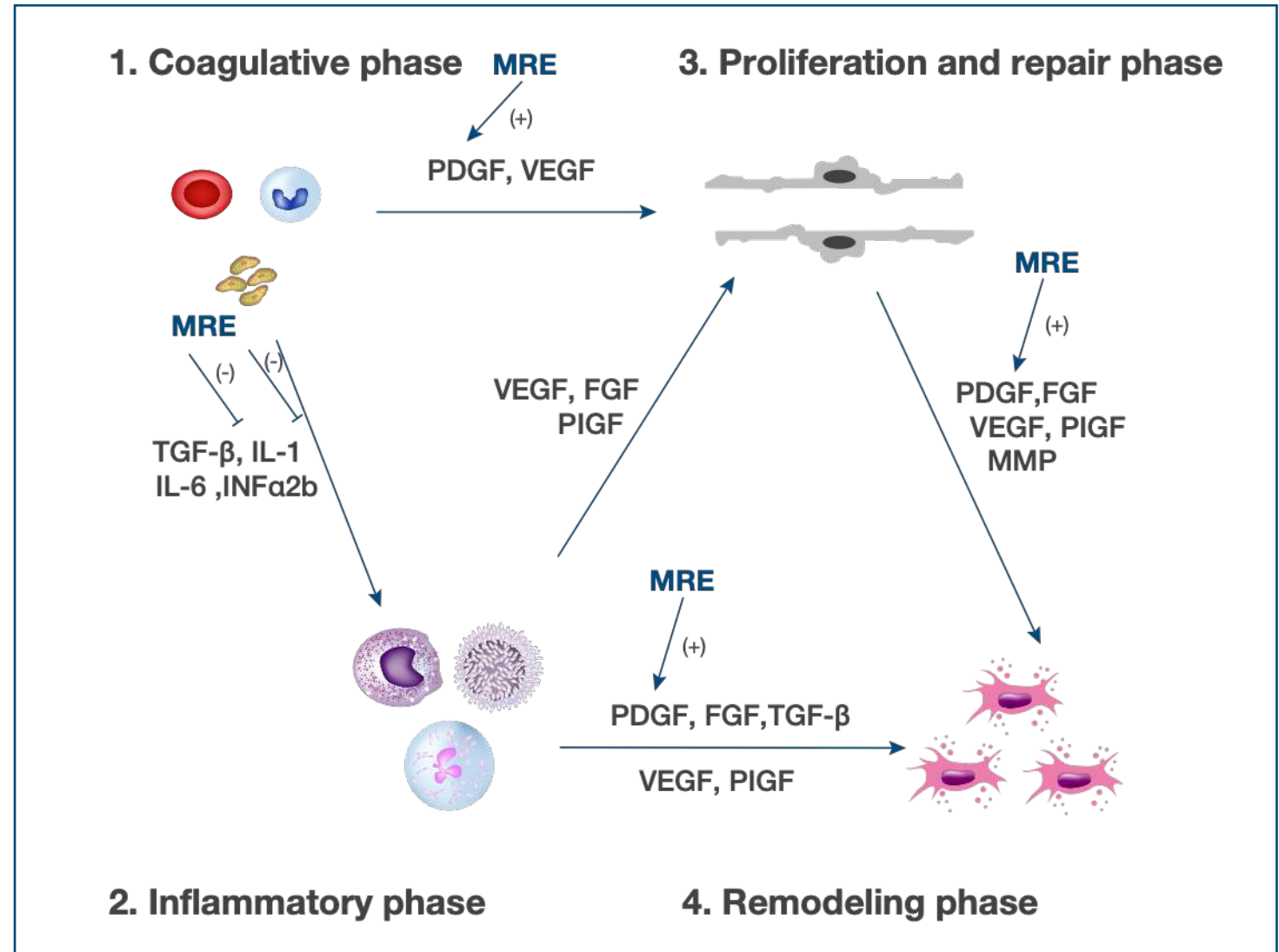
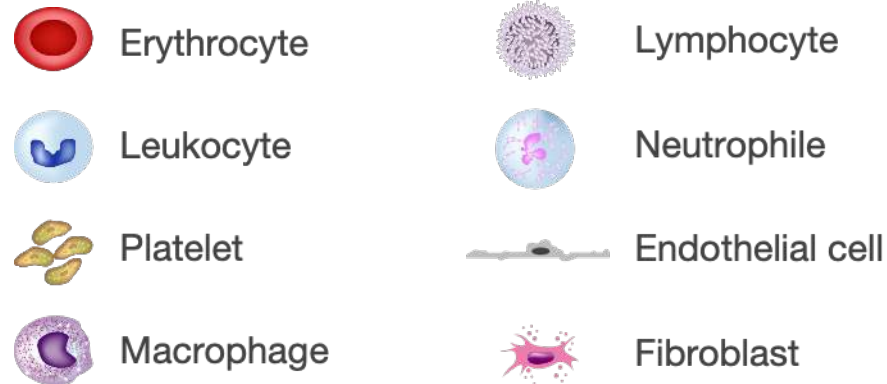


**MRE
with GME-1
IP ingredient**

Diabetic Foot Ulcers Healing

-Mechanism of GME-1

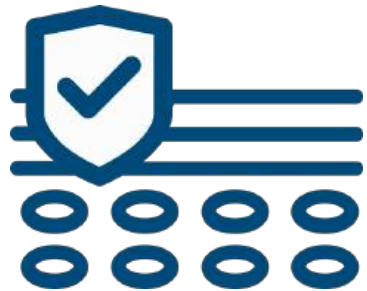
The mechanism of GME-1 test for diabetic foot ulcers wound healing



Diabetic Foot Ulcers Healing

- Clinical trial Result

GME-1 can be used for chronic wounds caused by hypertension, chronic diseases, renal problems, cardiovascular problems, and acne due to poor microvascular circulations (often occurring in prolonged bed rest).



Diabetic Foot Ulcers Healing Treatment

FDA: Phase II

FDA Phase II clinical results of GME-1

In treating diabetic foot ulcers healing treatment



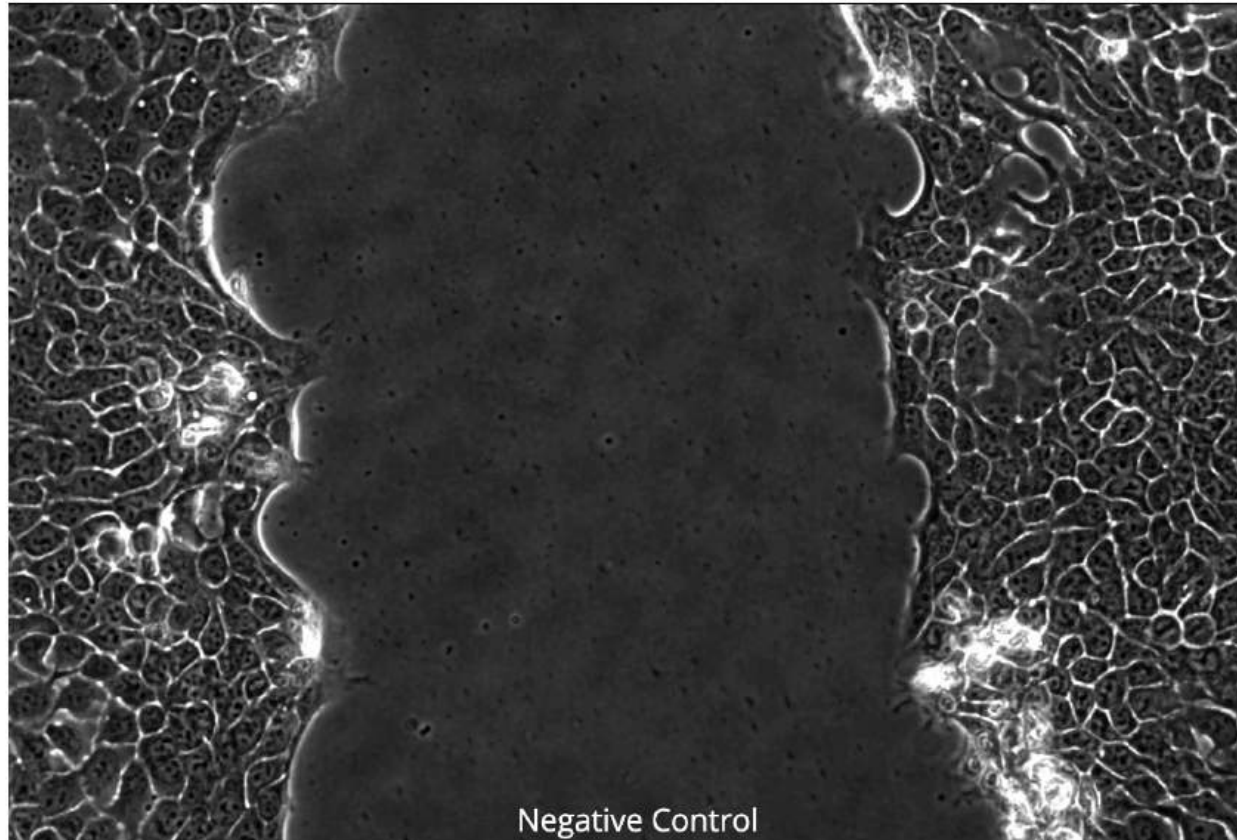
03/21/2014

05/29/2014

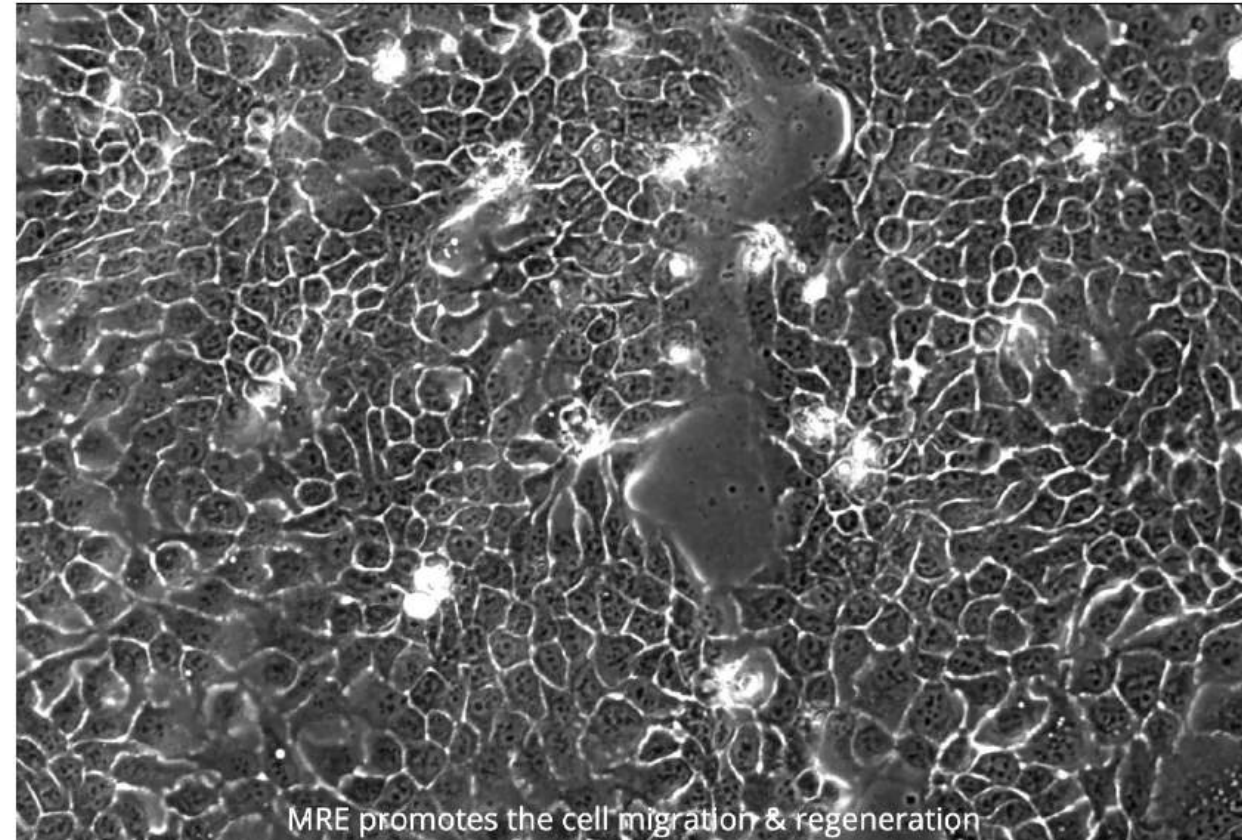
- Diabetic Foot Ulcer **GME-1** Case Reports (90 year old man)

GME-1 Derived from EVF-G3 technologies, Optimized formula has been assigned to FDA Clinical trial and has proved to have skin with strong regeneration capabilities against diabetes wounds.

Promotion of cell migration & regeneration



Negative Control



MRE with GME-1 IP ingredient



Revolutionary Dermatological Solutions Product: MRE

By activating skin's self-healing power with natural plant formula.

- Shorten the inflammatory phase.
- Improve the proliferative phase.
- Promote skin cell migration.

MRE can keep wounds in a moist environment to accelerate skin tissue regeneration, promote the wound to be healed and prevent scar formation.

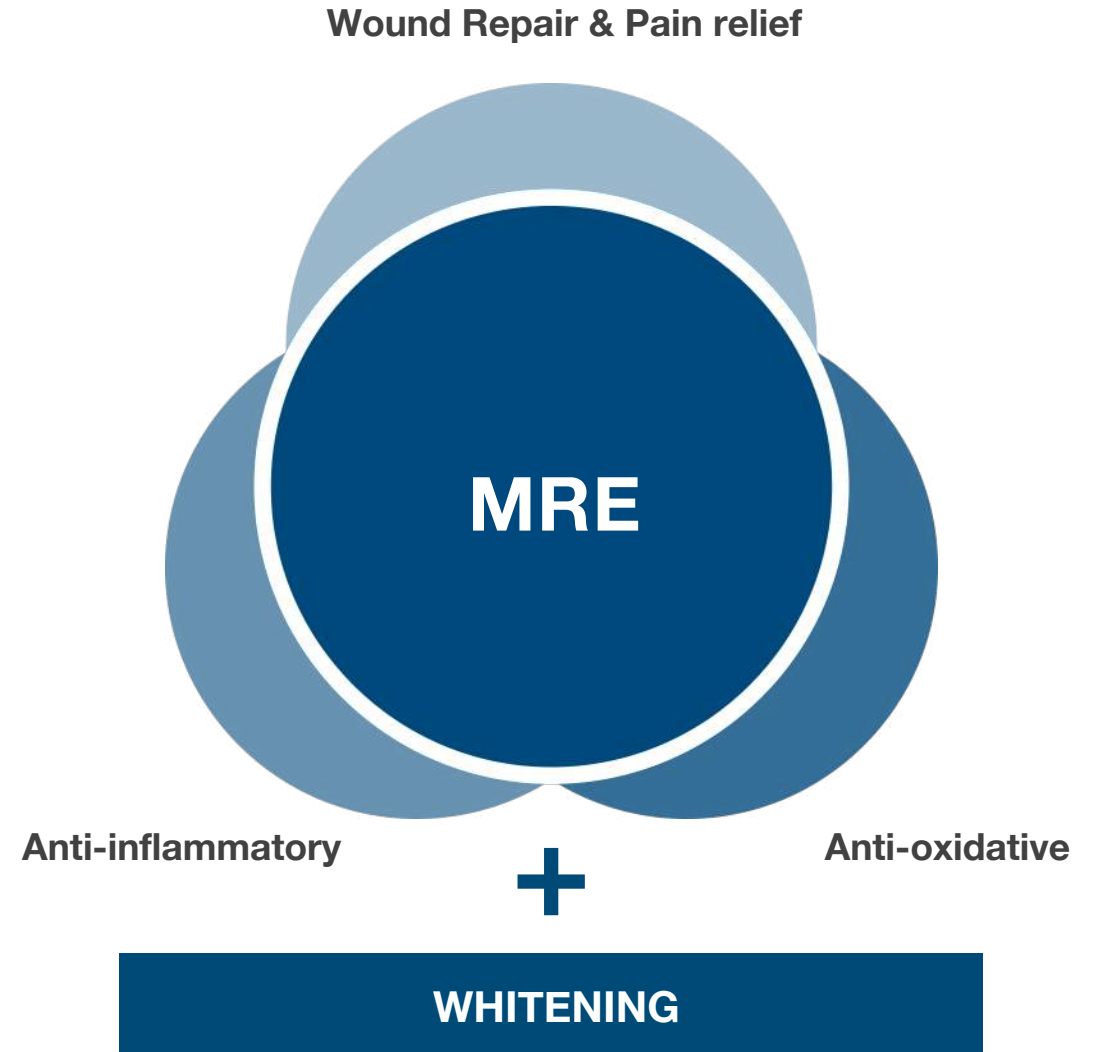
MRE can directly cover the wound, maintain the skin around the wound in a moisturizing environment, and promote skin tissue regeneration. The active ingredient is derived from the patented plant extracts, which is natural and safe for wound healing. The small molecules can be easily absorbed by skin, which makes wound healing more efficient.

Indication

Post-laser, MTS wound, Sensitive / Inflammation skin , Acne, Dermatitis, Pigmented skin

Effect

- Reduce skin inflammation and pigmentation
- Rebuild Stratum Corneum
- Soothe/Cooling skin redness
- Pain relief



Pre-Treatment Care

Full thickness skin regeneration healthy sebaceous glands and full thickness skin

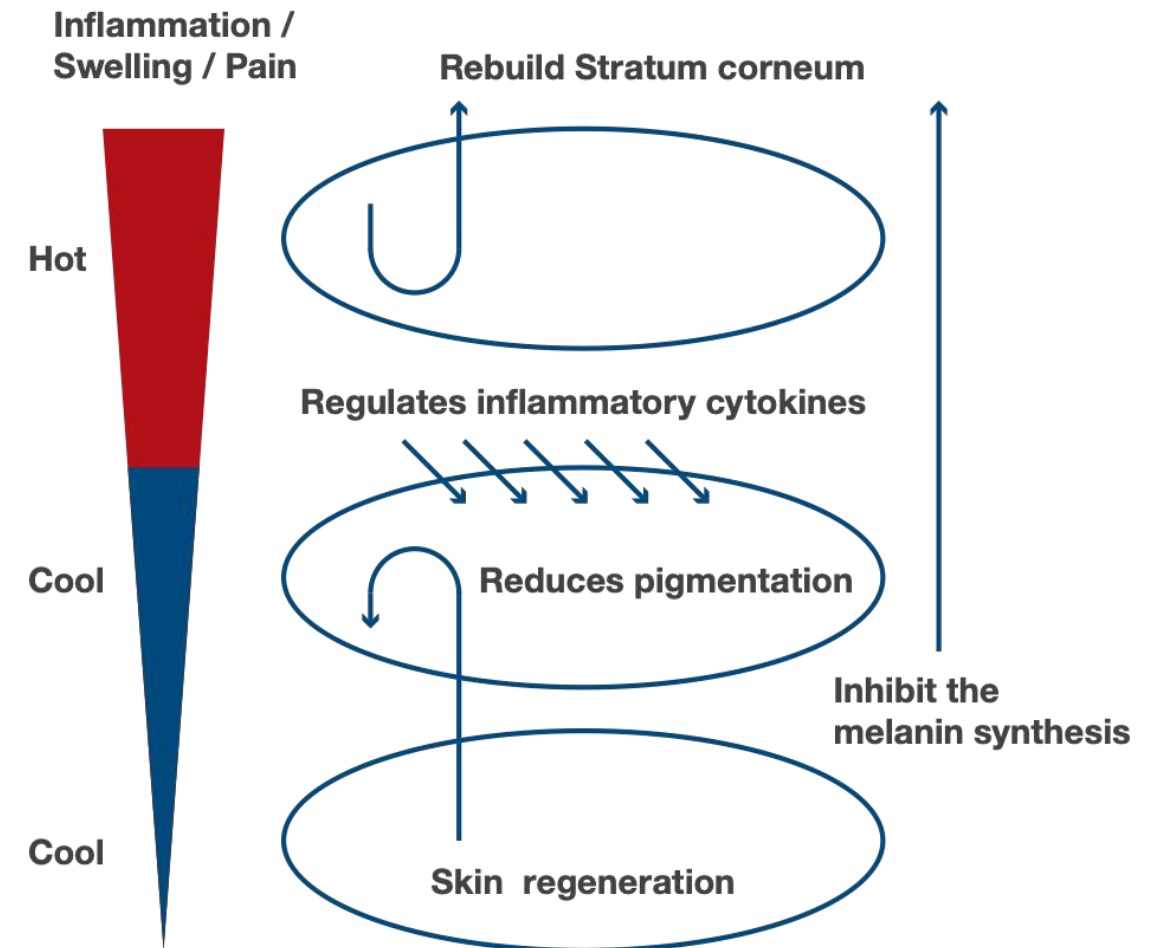
Rebuild Stratum corneum layer / Strengthen Sebum membrane / Improve subcutaneous circulation.

Laser of different energy levels causes skin inflammation

Ease pain / Soothes skin redness and swelling / Reduces pigmentation / Regulates inflammatory cytokines IL-1 β 、IL-6.

Accelerates cell regeneration, promotes wound healing

Reduces skin inflammation / Accelerates regeneration / Improve healing of wound in moisturizer environment / Regulates PDGF levels / Heals post-treatment wound / Microvascular restoring factors / Promotes cell migration.



Post-Treatment Care Protocol



A. Take MRE with cotton swabs

1. Finished laser/MTS treatment.
2. Prepare 1-2 pcs of clean cotton swabs.
3. Prepare 2 pcs of clean gauze.
4. Prepare normal saline / sterile water.



B. Apply 2-3 layers to the treatment area

1. Take MRE with cotton swabs.
2. Apply MRE evenly on the treatment area for 2-3 layers.



C. Rest for 15-20 minutes

1. Leave MRE on the treatment area , and rest for 15-20 minutes.
- Note : Do not massage the treatment area.*



D. Cleaning

1. Apply 2 pcs of gauze wet with Normal /sterile water.
 2. Gently "pointing" off the MRE essence on treatment area.
 3. MRE post-treatment protocol complete.
- Note : Avoid rubbing the wound during the cleaning process.*

- Usage amount: 1 vial/ treatment (person).
- When to use: Apply right after laser/MTS treatment.

Case reports for MRE – Diabetic wounds



Before



After



Before



After

Case reports for MRE –wound healing application on the blisters are caused by laser treatment overdose



After treatment -Day 7

Already used the other drugs are still useless, so begin to apply on MRE



Day9

(Applied MRE twice daily)



Day12



Day28

Case reports for MRE – Vital Injection Treatment

Total amount : 148 shot / Injection depth : 1.2~1.5mm



Before



Resting 20mins



After

Case reports for MRE – Vital Injection Treatment

Total amount : 148 shot / Injection depth : 1.2~1.5mm



Before



Resting 20mins



After

Case reports for MRE – Vital Injection Treatment

Total amount : 162 shot / Injection depth : 1.2~1.5mm



Before



Resting 15 mins



After

Case reports for MRE – Diabetic foot ulcer



20 years of diabetes, 50 years of smoking, history of CAD and CRF----- Left foot, severe gangrenous changes after third toe amputation and before treatment



www.aaspl.sg | +65 8478 0262 | wen@aaspl.sg

Professional Edition